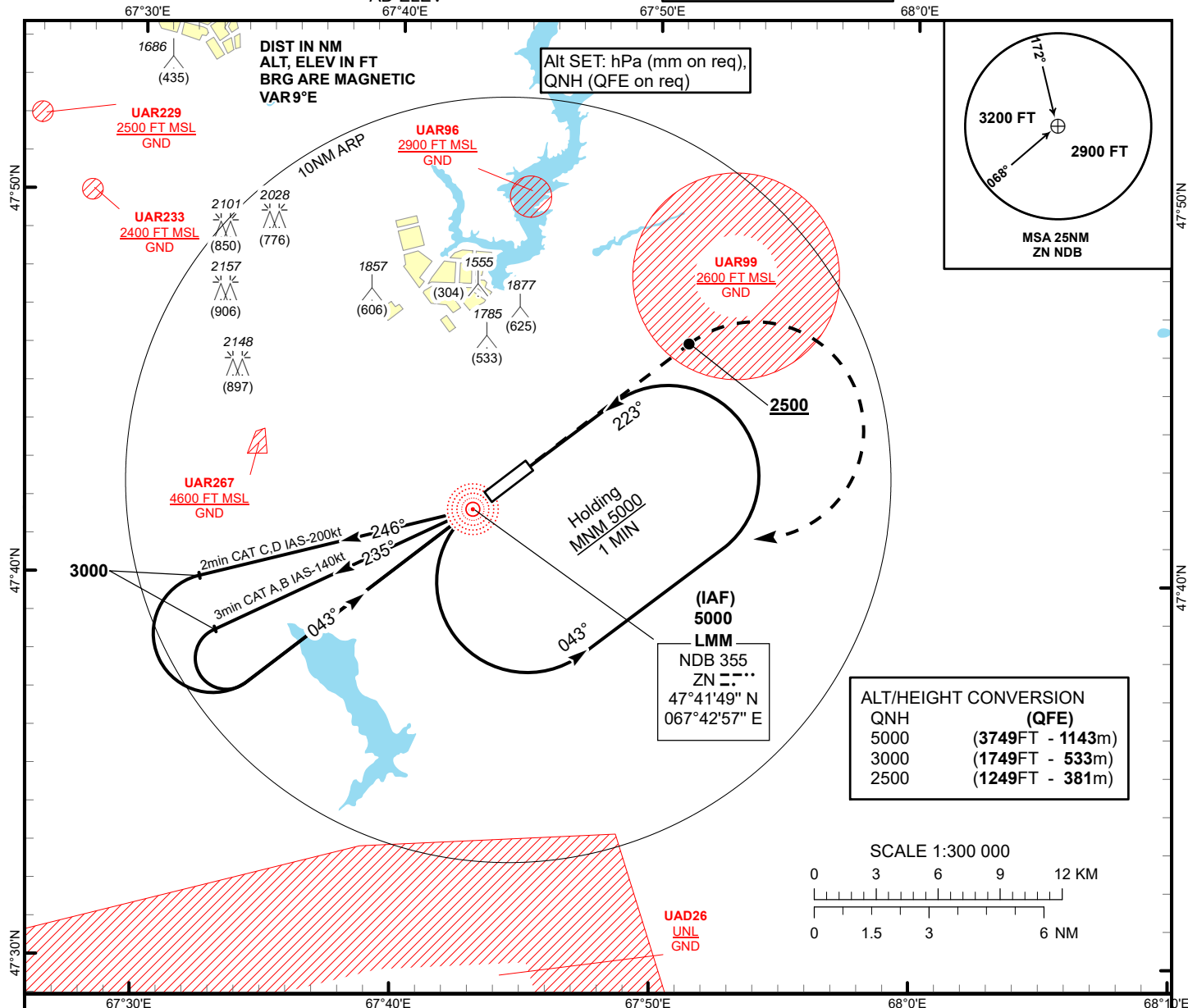


INSTRUMENT
APPROACH
CHART - ICAO

AERODROME ELEV 1251FT
HEIGHTS RELATED TO
AD ELEV

ZHEZKAZGAN TOWER 127.1
ZHEZKAZGAN ATIS (EN) 131.4
ZHEZKAZGAN ATIS (RU) 122.4

ZHEZKAZGAN
NDB
RWY 04



TRANSITION ALT
10000

IAF 5000

3000

043°

043°

MISSED APPROACH

Climb on track 043° to 2500 or above,
after passing ZN maintain 043° for 1 min 20 sec,
then turn RIGHT to ZN.

Climb initially to 3000, then as directed.

RADIO FAILURE:

In the case of RCF
climb to 5000 to ZN
and join to holding pattern.
Missed approach turn speed
limited to 250kt IAS maximum.

ELEV 1251

THR RWY 04

CHANGE: MAG VAR.

Aircraft Category		A	B	C	D
Straight-in Approach OCA/H	NDB	1580(330)	1580(330)	1580(330)	1580(330)
Aerodrome Operating Minima MDH ft x RVR (CMV)					
NDB					

ZHEZKAZGAN
NDB

AERONAUTICAL DATA TABULATION

NDB approach to RWY04 from NDB ZN	
Fix/point	Coordinates
LMM NDB ZN	47° 41' 48.7"N 067° 42' 56.9"E
THR RWY04	47° 42' 06.51"N 067° 43' 29.14"E